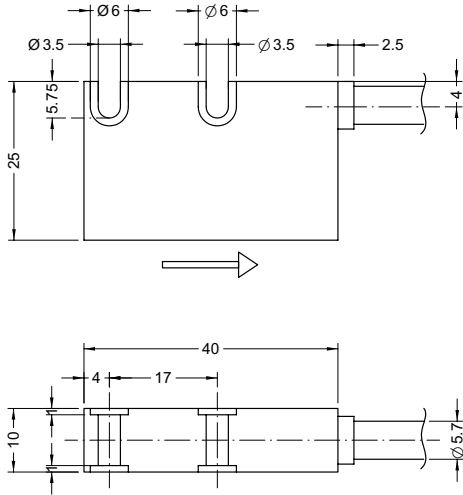




series **SMK**



SMK

ENVIRONMENTAL SPECIFICATIONS

Operating temperature range:	-10°C ÷ +70°C (+14°F, +158°F)
Storage temperature range:	-20°C ÷ +80°C (-4°F, +176°F)
Protection:	IP67

MECHANICAL SPECIFICATIONS

Dimensions:	see drawing
Housing:	aluminium
Connection:	cabl 2,0 m
Gap magnetic tape-sensor:	0,1 ÷ 4,0 mm
Travel speed:	5 m/s max.
Resolution:	1 / 0,5 / 0,1 / 0,05 / 0,025 / 0,01 mm
Accuracy:	see MT50 magnetic tape
Repeatability:	1 increment

ELECTRICAL SPECIFICATIONS

Power supply:	+10V ÷ +30V, +5V ÷ +30V
Output circuits :	Universal circuit, Line Driver, Push-Pull
Output signals :	A, /A, B, /B, I, /I
Output current (per channel):	40 mA max
Input current:	70 mA max
Protection:	against inversion of polarity

ACCESSORIES

MT50:	Magnetic tape
PS1:	Protection profile

ORDERING CODE

XXX	-	X	-	X	-	X	-	XX
SERIES								INDEX
SMK								N without I every 5 mm
OUTPUT CIRCUIT								RESOLUTION
PP/LD universal circuit (AB, /AB) H Push-Pull (AB) Y Line Driver (AB, /AB) L								1000 1 mm 500 0,5 mm 100 0,1 mm 50 0,05 mm 25 0,025 mm 10 0,01 mm
POWER SUPPLY								XX
+10V ÷ +30V (Y and L) 2 +5V ÷ +30V (H) 4								Cable length on request Es: 2 = 2 meters 7 = 7 meters

